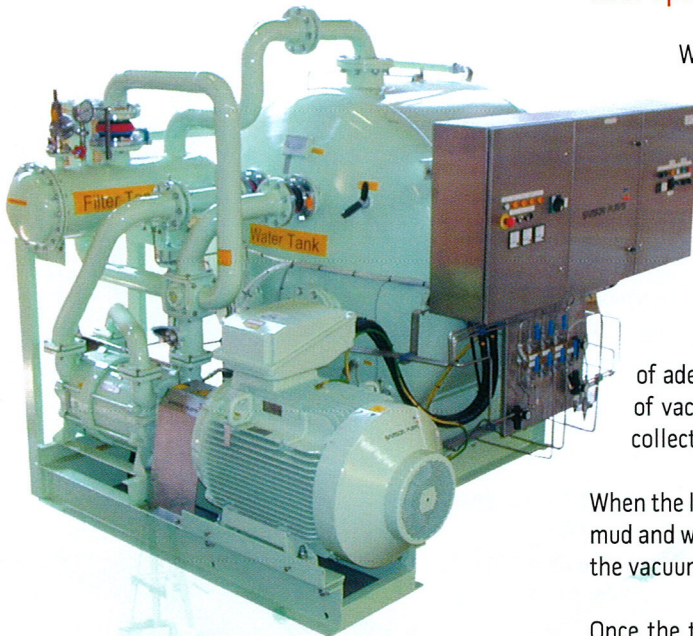




MECTRON ENGINEERING PTE LTD
Engineered Systems & Solutions for Marine & Offshore

MUD VACUUM UNIT

Mectron offers the SAMSON offshore automated mud vacuum units to clear drippings and spillages of daily drill floor operation.



With 40 years of experience in manufacturing vacuum units, SAMSON has developed the OS series of the modular vacuum units to suit all the requirements in offshore application.

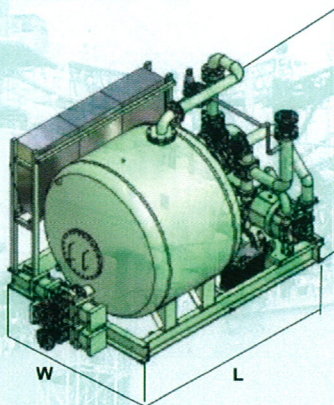
At the heart of mud vacuum unit is the versatile SAMSON liquid ring pump with superb and efficient performance and high reliability

The pump is connected to a robust constructed vacuum tank of adequate capacity. The tank is in turn connected to a labyrinth of vacuum pipes or hoses located on the production floor for the collection of mud and spillages.

When the liquid ring pump operates, it creates a vacuum in the tank, and mud and waste will be pneumatically sucked from the drill floor through the vacuum pipes into the tank.

Once the tank is full, the mud vacuum unit will automatically go into pressure mode, it will enable the tank to be pressurized so that the collected product will be pressured out to the waste storage container. The vacuum unit will return to vacuum mode once the waste product is purged.

The mud vacuum unit can be DNV or ABS approved upon request. All equipment can be used for ATEX zone 1.



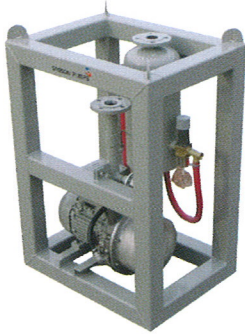
OS SERIES

TYPE	Capacity		Pressure		Power Kw	Air Velocity in 2" pipe m/sec	Dimension			
	Tank (liters)	Suction (m3/hr)	Vacuum mbar abs	Pressure barg			Length mm	Width mm	Height mm	Weight kg
OSV 500	2000	500	100	2	30	70	2500	1600	2400	2500
OSV 800	2600	600	33	4.5	55	80	3200	2400	2350	4500
OSC 600	1500	700	100	2	30	50	2991	2438	2591	3000

OSV – skid mounted unit
OSC – containerized unit



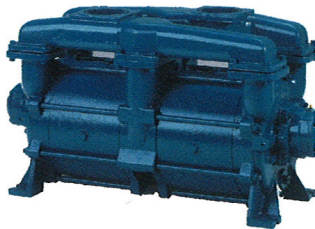
MINI VAC MV150



Technical specifications

Suction capacity	150m ³ /hr
Max vacuum	33 mbar abs
Max pressure	1.0 barg
Power supply	400 V/ 50 / 60 Hz
Power requirements	4.0kW
Dimensions	L:750mm W: 550mm H: 1000mm
Weight	200kg

VACUUM PUMPS



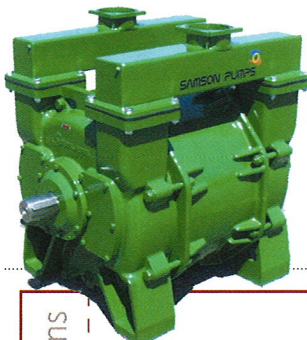
Technical specifications

Type	KS1800 (V30)
Capacity airflow	900 – 1800 m ³ /hr
Vacuum	100 mbar abs



Technical specifications

Type	TS700 (T15) - 2 stage
Capacity flow	300 - 800 m ³ /hr
Vacuum	33 mbar abs



Technical specifications

Type	KV3400 (V45) KV4500 (V65)
Capacity flow	2000 - 5000 m ³ /hr
Vacuum	100 mbar abs

Reference Installations

Project	Owner
B273	A.P. Moller – Maersk A/S
B274	A.P. Moller – Maersk A/S
B275	A.P. Moller – Maersk A/S
B276	A.P. Moller – Maersk A/S
B280	A.P. Moller – Maersk A/S
B281	A.P. Moller – Maersk A/S
B288	Global Santa Fe
B295	A.P. Moller – Maersk A/S

■ **Mectron Engineering Pte Ltd**
78 Tuas Avenue 11
Singapore 639095
Singapore
Tel : +65 6863 3033
Fax : +65 6863 3900
Email : mectron@singnet.com.sg
Website : www.mectron.com.sg

■ **Malaysia**
Mectron Engineering Equipment Sdn Bhd
No. 51 Jalan Juruanalisis U1/35
Glenmarie Industrial Park, Seksyen U1, 40150
Shah Alam, Selangor Darul Ehsan
Malaysia
Tel : +60 3 5569 9937
Fax : +60 3 5569 3937
Email : mectron@mectron.com.my
Website : www.mectron.com.my

■ **Shanghai**
Shanghai Fa Te Fei Co Ltd
R503, No. 3 Alley 500, Qingzhou Rd, Xuhui
Shanghai
Tel : +86 21 5448 1295
Fax : +86 21 5448 1296
Email sales@waterfield.com.cn
Website: www.waterfield.com.cn